

**TOP
TRUMPS**

PLAY AND LEARN MATHS

**YEAR 2
MATHS**

Maltese



**TOP
TRUMPS**
PLAYING CARDS

Size	4 - 3	
Cuteness	11 + 11	
Rarity	5 + 2	
TT Rating	70 - 4	

German
Shepherd



**TOP
TRUMPS**
PLAYING CARDS

Size	2 + 2	
Cuteness	20 - 15	
Rarity	3 - 4	
TT Rating	48 + 3	

Bulldog



**TOP
TRUMPS**
PLAYING CARDS

Size	7 - 3	
Cuteness	20 + 5	
Rarity	10 - 6	
TT Rating	3 + 7	

Daschund



**TOP
TRUMPS**
PLAYING CARDS

Size	8 - 2	
Cuteness	25 + 4	
Rarity	15 - 10	
TT Rating	63 + 4	

Stray
Dog



**TOP
TRUMPS**
PLAYING CARDS

Size	6 - 3	
Cuteness	11 + 4	
Rarity	3 + 2	
TT Rating	50 + 50	

Shih Tzu



**TOP
TRUMPS**
PLAYING CARDS

Size	5 - 3	
Cuteness	22 + 3	
Rarity	9 - 2	
TT Rating	30 + 5	

Staffordshire
Bull Terrier



Size	7 - 4	
Cuteness	9 + 5	
Rarity	10 - 6	
TT Rating	50 + 10	

Pug



Size	10 - 9	
Cuteness	22 + 5	
Rarity	5 - 3	
TT Rating	5 + 35	

Poodle



Size	7 - 6	
Cuteness	26 + 1	
Rarity	9 - 7	
TT Rating	20 + 20	

Saint
Bernard



Size	5 + 1	
Cuteness	22 + 3	
Rarity	10 - 2	
TT Rating	90 + 4	

Chihuahua



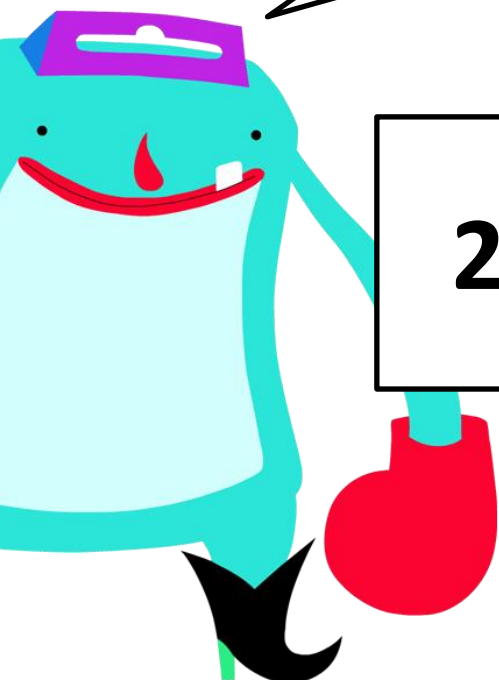
Size	4 - 3	
Cuteness	27 + 2	
Rarity	2 + 2	
TT Rating	90 - 5	

Basset Hound

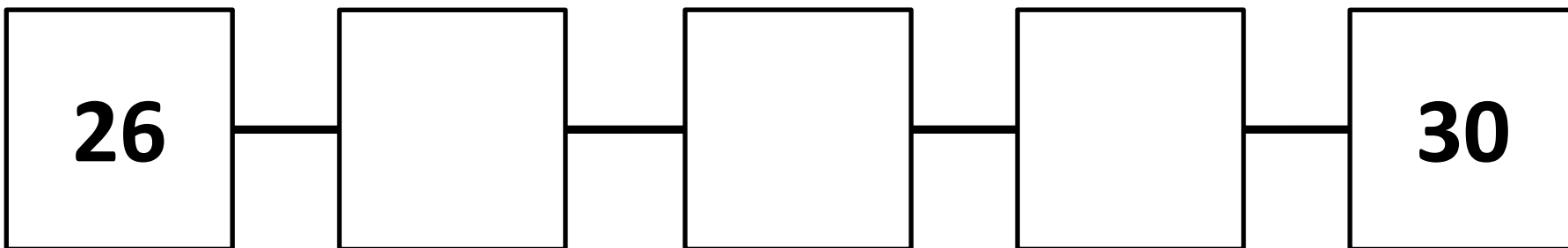


Size	9 - 6	
Cuteness	30 - 3	
Rarity	5 - 1	
TT Rating	53 + 2	

Count on in ONES



22



COUNTING

15

Count back **3**

7

Count back **1**

11

Count back **4**

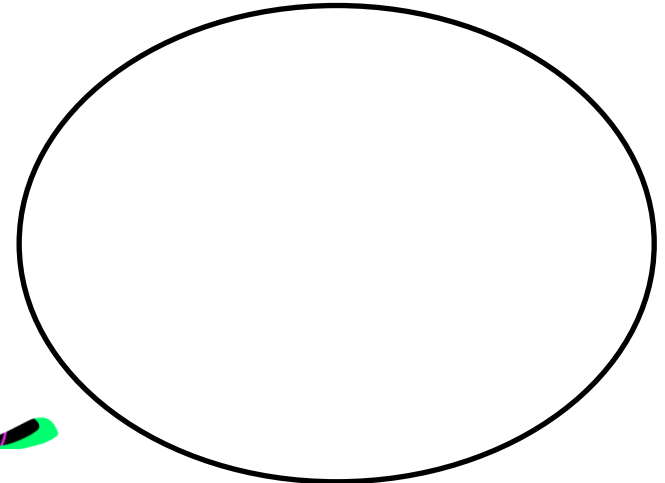
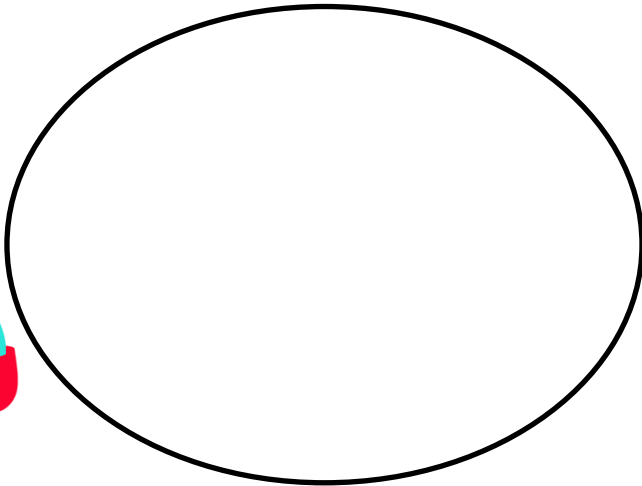
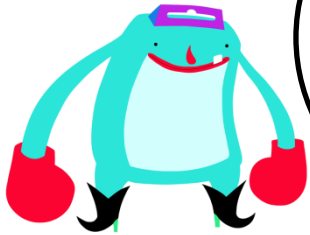
9

Count back **2**

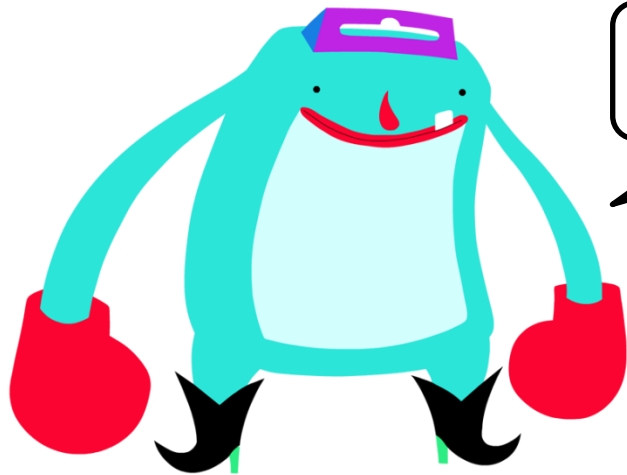
Lets see if you can
count backwards!



Toppy and Trumpy both love Top Trumps!
Divide the packs evenly between both of them



How many do they both get?



What's the time Mr
Wolf?

Do I look like a wolf to
you?

