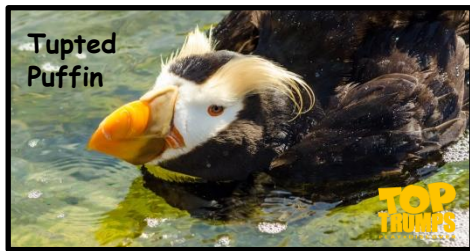


**TOP
TRUMPS**

PLAY AND LEARN MATHS

YEAR 6

MATHS



Size (cm)	90 - 52	
Weight (kg)	1.0 - 0.2	
Dive (m)	15 x 2	
Cuteness	22.5 x 2	



Size (cm)	120 ÷ 3	
Weight (kg)	0.4 + 0.3	
Dive (m)	5 x 3	
Cuteness	100 - 63	



Size (cm)	50 - 12	
Weight (kg)	1.5 - 1.0	
Dive (m)	7 x 4	
Cuteness	50 - 13	



Size (cm)	8 x 10	
Weight (kg)	9.0 - 3.1	
Dive (m)	18 x 5	
Cuteness	90 ÷ 2	



Size (cm)	204 ÷ 3	
Weight (kg)	2.4 x 2	
Dive (m)	82 - 22	
Cuteness	20.5 x 2	



Size (cm)	35 x 2	
Weight (kg)	36 ÷ 9	
Dive (m)	27 - 8	
Cuteness	45 - 8	

Magellanic



Size (cm)	$62 + 9$	
Weight (kg)	2.4×2	
Dive (m)	8×6	
Cuteness	$114 \div 3$	

African



Size (cm)	$340 \div 5$	
Weight (kg)	$2.4 + 0.7$	
Dive (m)	5×6	
Cuteness	8×3	

Emperor



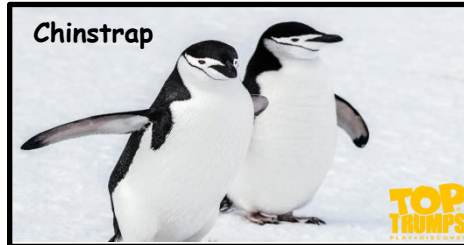
Size (cm)	$1,000 \div 10$	
Weight (kg)	8×4	
Dive (m)	$66 - 17$	
Cuteness	7×7	

Yellow- Eyed



Size (cm)	$58 + 11$	
Weight (kg)	$9.0 - 3.9$	
Dive (m)	5×7	
Cuteness	$176 \div 4$	

Chinstrap

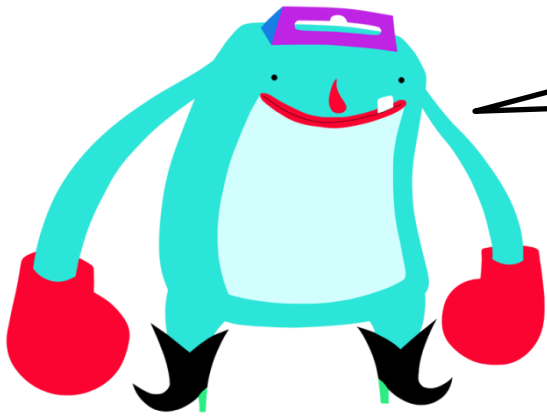


Size (cm)	37×2	
Weight (kg)	$10.0 - 5.1$	
Dive (m)	9×5	
Cuteness	$270 \div 6$	

Blue



Size (cm)	$75 - 32$	
Weight (kg)	$0.9 + 2$	
Dive (m)	$23 - 16$	
Cuteness	21×2	



Can you do these sums when the numbers are written?

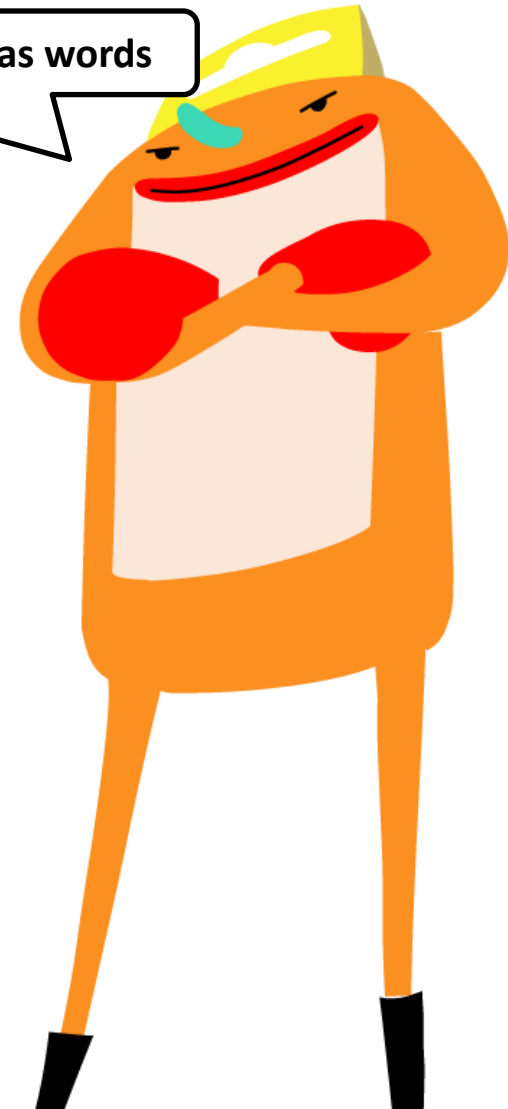
Make sure the answers are written as words

1. Three hundred thousand plus six thousand two hundred

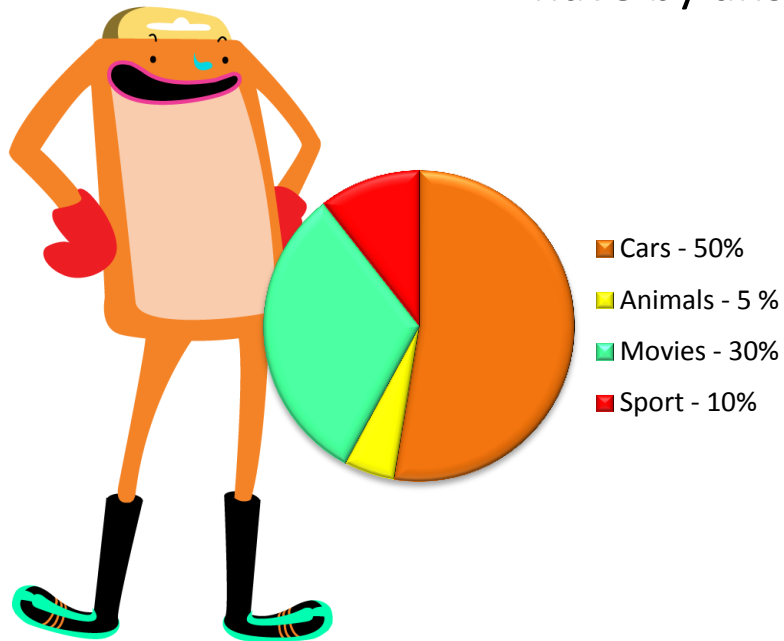
2. Two hundred and ten thousand minus forty thousand

3. Four thousand three hundred times twelve

4. Fourteen thousand six hundred and twenty divided by seven

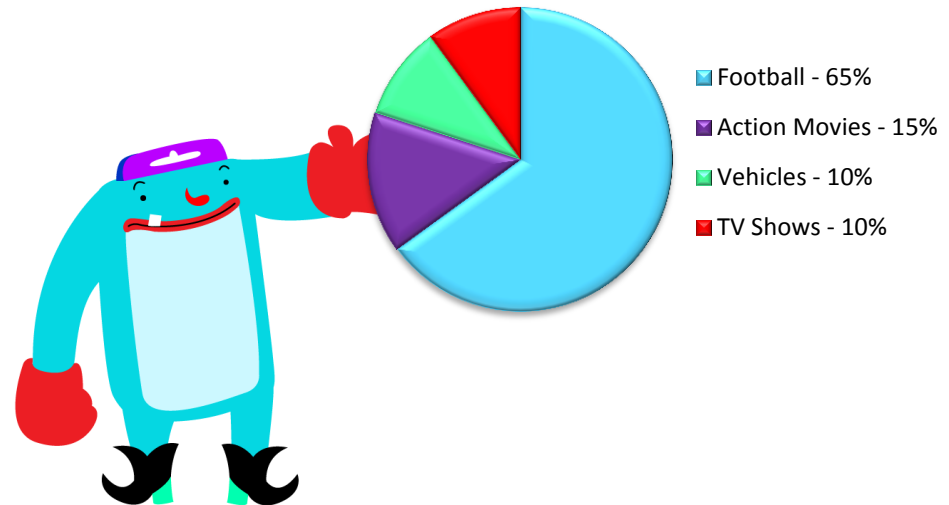


Topsy and Trumpy own loads of packs of Top Trumps. Can you work out what they have by answering the questions below?



Topsy has 30 packs of Top Trumps

1. How many packs are sport?
2. How many packs are animals?
3. If Topsy was to pick a pack at random out of his box, what is the probability it would be a Movies pack? (Write as a fraction)



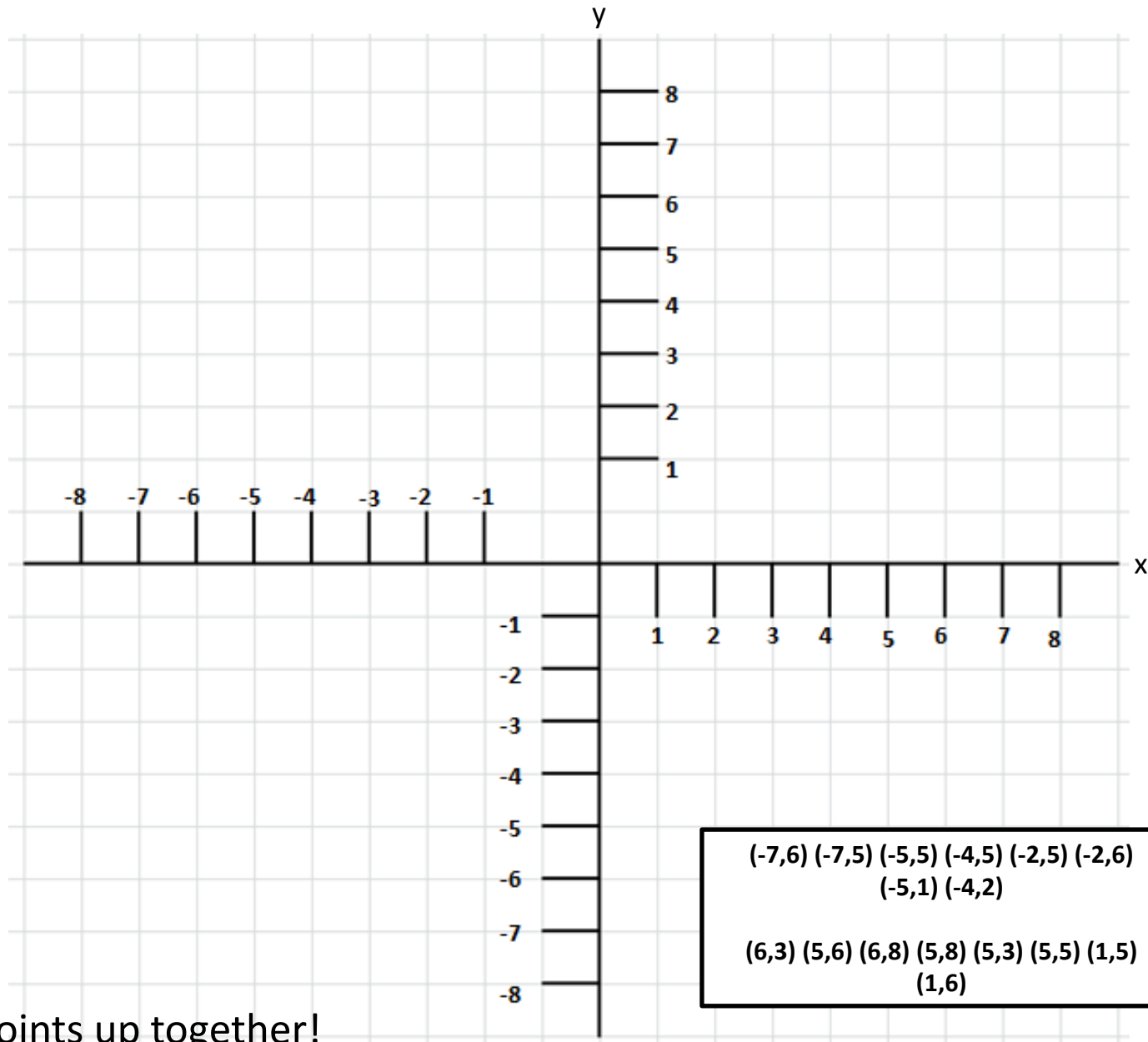
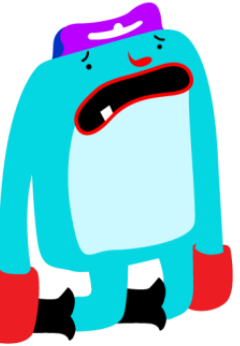
Trumpy has 42 packs of Top Trumps

1. How many packs are football?
2. How many packs are action movies?

Topsy has kindly given Trumpy 4 packs of action movie Top Trumps because he prefers romantic comedies

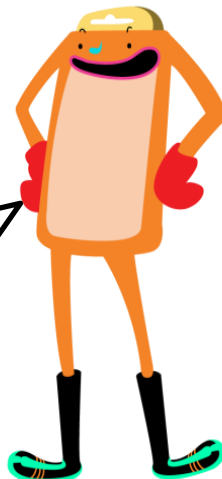
3. What percentage of packs does he now have of action movies?
4. What percentage of packs does Topsy now have of movies?

Tippy is teaching Trumps about co-ordinates, can you help him find the points?



$(-7,6)$ $(-7,5)$ $(-5,5)$ $(-4,5)$ $(-2,5)$ $(-2,6)$
 $(-5,1)$ $(-4,2)$

$(6,3)$ $(5,6)$ $(6,8)$ $(5,8)$ $(5,3)$ $(5,5)$ $(1,5)$
 $(1,6)$



Join the points up together!